

THE STAFF

Nikki Hartranft Rhoads

Camp Director and head coach at Bloomsburg University. She is a 2004 Bloomsburg graduate and a three-time All-American. In eight seasons as the Huskies' head coach, she has guided the program to a 104-52 overall record and to two Pennsylvania State Athletic Conference (PSAC) titles.

Courtney Noll

Assistant field hockey coach and Student-Athlete Advocate at Bloomsburg University. Noll played collegiate field hockey at Division I Miami University of Ohio.

Jan Hutchinson

Former Bloomsburg University field hockey and softball coach. Hutchinson is the nation's winningest collegiate field hockey coach and led the Bloomsburg field hockey team to 16 national titles and 16 PSAC titles. She was inducted into the Bloomsburg Athletic Hall of Fame in 2016.

Lindsay Cassel

Former Bloomsburg University All-American goalkeeper and current Bloomsburg University volunteer assistant/goalkeeping coach.

Additional Staff

Includes current and former Bloomsburg University field hockey players.

INFORMATION



The University

Bloomsburg University is one of 14 universities in the State System of Higher Education. The University currently serves the educational needs of 9,800 undergraduate and graduate students in 100 programs of study. Bloomsburg is served by the Greyhound and Susquehanna Trailways bus lines.

Medical Care & Insurance

Although Bloomsburg University maintains a complete athletic training room for the treatment of minor injuries, illness or injury requiring medical treatment, hospitalization and/or surgery will be referred to The Bloomsburg Hospital.

For this reason, the parent or guardian of each camper must complete and digitally sign the medical information section of the on-line registration granting permission to administer appropriate medical attention if necessary. Bloomsburg University does not provide medical insurance for young people attending its summer camps.

Should hospitalization and/or the care of a physician be needed, the camper must use his or her medical insurance plan for payment of medical services. **All campers must have insurance to attend camp.**

Camp Rules

Campers are expected to attend all scheduled sessions and to heed the University's rules of decorum. Specifically, smoking tobacco, possession or consumption of illegal drugs and the use of alcoholic beverages are strictly forbidden. Flagrant misconduct will subject the camper to immediate dismissal without refund of camp fees. Resident campers are also not permitted to drive their personal vehicles while enrolled in camp. Keys to private vehicles must remain in the custody of the director for the duration of camp.

Hazings and initiations will not be tolerated in camp.

LOCATION



Location

Bloomsburg is located 75 miles from the PA/NJ border on Interstate 80.

From Interstate 80 - Take exit 236 and merge onto Route 487 south. Go to the third traffic light (Country Club Drive) - turn right to the athletic fields, turn left for the dormitories.

From south - PA Turnpike north to Interstate 80 west - then follow above directions.

From south and west via Route 11 - Route 11 north to Bloomsburg. Proceed up the Main Street of town - turn left onto Route 487 North to traffic light (Country Club Drive) - turn right for dormitories, left for fields.

Registration

Registration and check-in is on Sunday, July 29 from 10:30 a.m. to 1:00 p.m. The first session starts at 2 p.m. Meals begin with Sunday lunch and end with Wednesday lunch. Check-out is Wednesday, August 1 from 3:00 p.m. to 5:00 p.m. Further camp information will be sent upon receipt of application.

Deposits

Please go to www.BUcamps.com to pay your nonrefundable deposit of \$75.00 by debit or credit card. The remaining balance will be charged to that same card on July 20, 2018.

For Further Information

Please contact Bloomsburg University head coach, Nikki Rhoads: office 570-389-4380 • nrhoads@bloomu.edu • www.BUHuskies.com

Bloomsburg University is committed to Affirmative Action and Equal Opportunity. Minorities, women, and other protected class members are urged to pursue educational and employment opportunities at Bloomsburg University.



**Bloomsburg
University
of Pennsylvania**



FIELD HOCKEY CAMP



July 29 - August 1

Online Registration

www.BUcamps.com

TEAM/INDIVIDUAL

July 29 - August 1

Four intense days to help prepare you for your high school season! The Bloomsburg University Summer Field Hockey Camp puts you on a field of National Champions under the guidance of the coaches who are veterans of the winner's circle.

GAIN THE COMPETITIVE EDGE!!

This camp provides a great challenge both mentally and physically for players who are looking to gain the competitive edge. Maximize your individual and team potential through advanced techniques and training sessions.

Register early and secure your team's place in camp.



GOALKEEPERS

July 29 - August 1

During the week, we will feature a special goalie camp during the day. There will be morning and afternoon sessions covering all aspects of goal-keeping. Goalies will compete with their high school teams for evening competitions or be assigned to games if their teams are not in camp.



All Field Hockey Camps ONLINE REGISTRATION

Your camp registration can be completed online at:
www.BUcamps.com

Coaches - call early to reserve your team's place in camp at 570-389-4380 or e-mail your request to nrhoads@bloomu.edu

CAMP FEES

Boarding - \$430
Commuting - \$345

Did You Know ... Bloomsburg is the only collegiate field hockey program to win four straight NCAA Titles...twice (1996-1999; 2006-2009)

SAVE THE DATES

Information regarding additional clinics will be posted at www.BUHuskies.com as well as www.BUcamps.com throughout the year.



DAILY SCHEDULE

Tentative Daily Schedule

7:30 a.m. - 8:30 a.m.
Breakfast

9:00 a.m. - 11:00 a.m.
Individual Offensive and Defensive Skills
Team Building Challenges

11:00 a.m. - 1:00 p.m.
Lunch

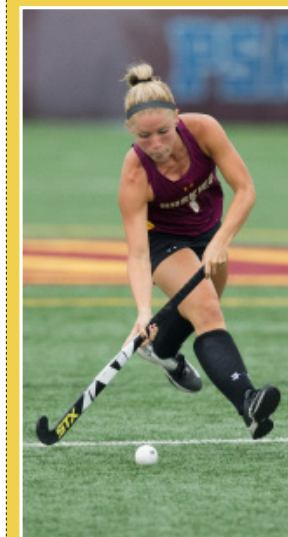
1:30 p.m. - 3:30 p.m.
Advanced Team Techniques and Strategies

3:30 p.m. - 4:30 p.m.
Free Time

4:30 p.m. - 5:30 p.m.
Dinner

6:00 p.m. - 9:00 p.m.
Tournament Competition

BLOOMSBURG UNIVERSITY FIELD HOCKEY



16
National
Championships

9
National
Runners-Up

18
PSAC Titles

111
All-American Awards
13
National "Player of the
Year" Awards